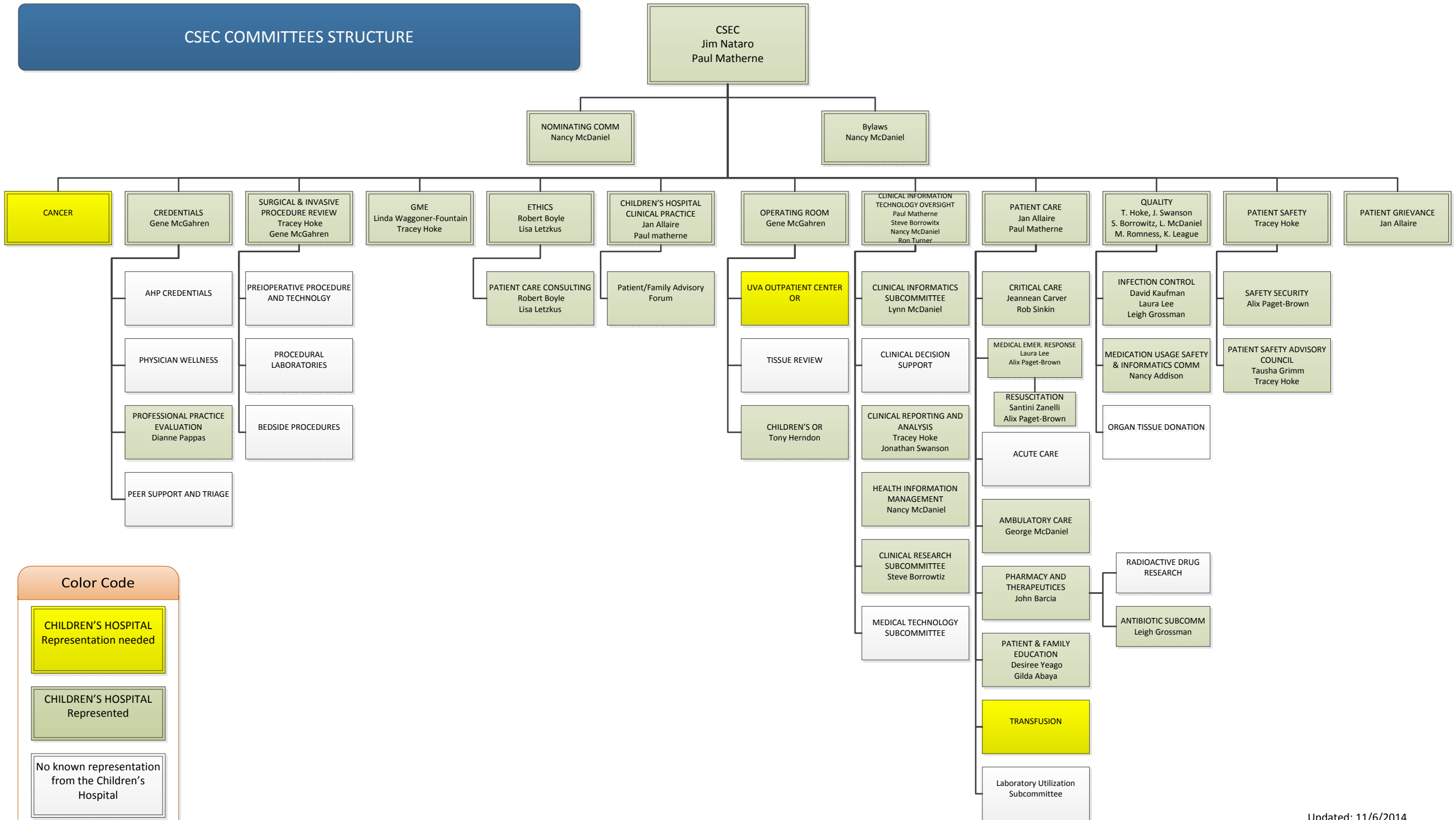


CSEC COMMITTEES STRUCTURE



Color Code

- CHILDREN'S HOSPITAL Representation needed
- CHILDREN'S HOSPITAL Represented
- No known representation from the Children's Hospital



Definitions (Draft)

Standing Committee- a permanent committee dealing with a designated subject

Committee- a small deliberative assembly that is usually subordinate to another larger deliberative body

Task force- a unit or formation established to work on a single defined task or activity

NB. **TBD** means we need to determine if the group is active or has resolved its issues and is dissolved OR information is unavailable.

